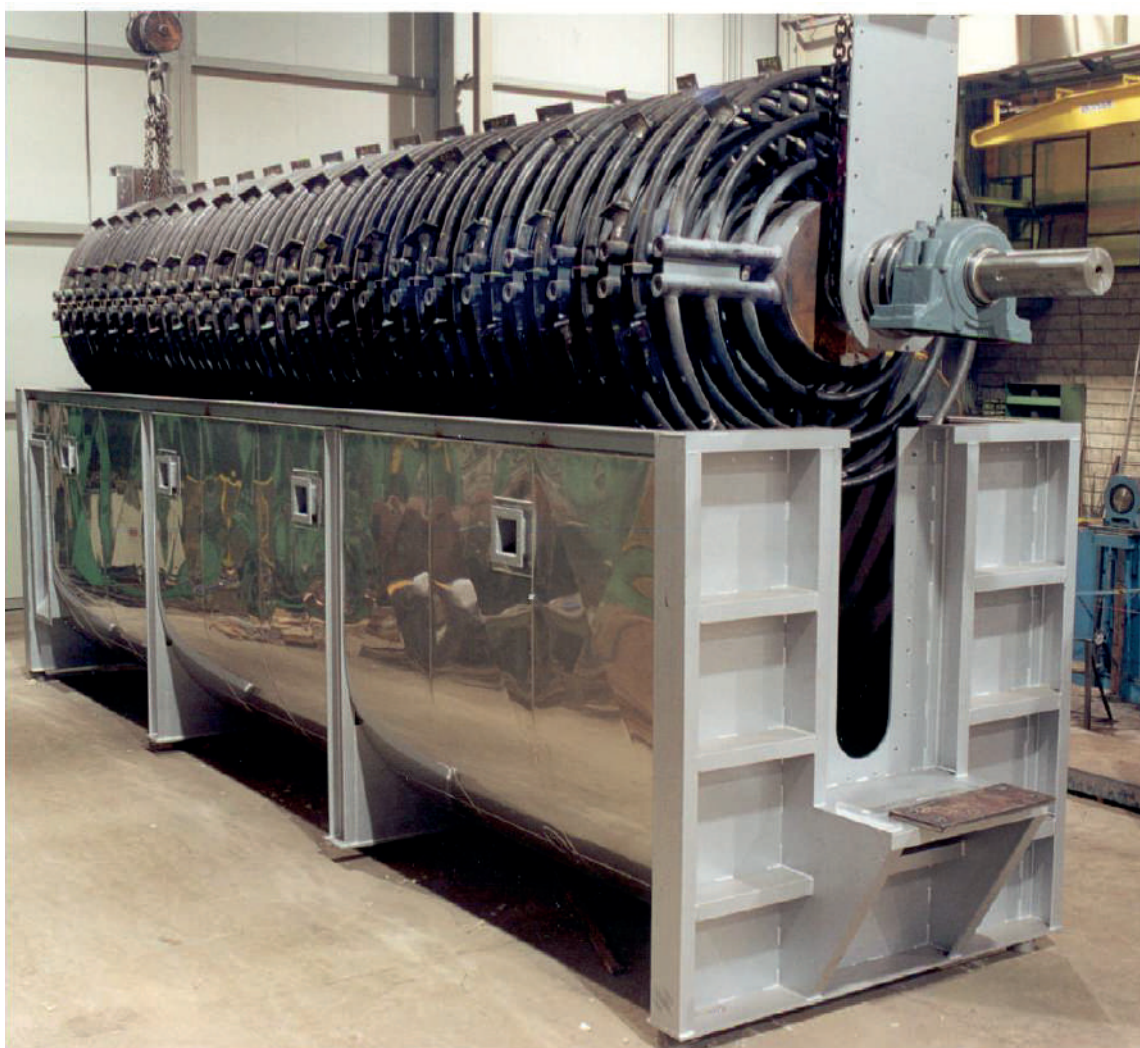
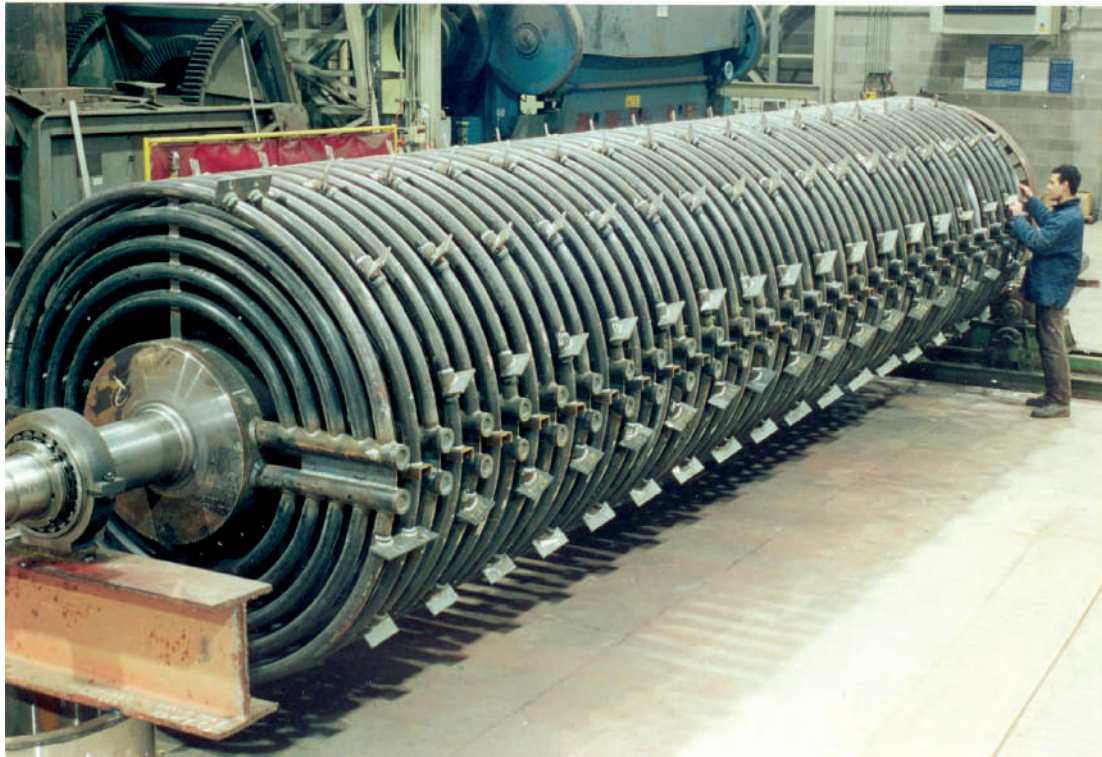


## DRIER TYPE RST





The drier is composed of a stationary U-shaped basin.

The inside rotor is made up of a series of heating rings, formed of pipes which are radially connected to a central shaft, which, besides transmitting the rotary motion to the heating rings, has also the function of parallel vapour feed and condensate collector.

The blades arranged on the pipes which form the rotor, as well as a gate with adjustable height on the discharge hole of the drier, permit the adjustment of the product dwell time in the drier and its drying degree.

A special rotary joint applied to the shaft permits the feed and the discharge of the heating fluid.

The drier can be made in stainless steel or carbon steel with heating surface from 10 to 300 m<sup>2</sup> with a minimum electrical power installed.

Can be utilized for animal by-products, fish meal, blood, sludge and many other applications.





